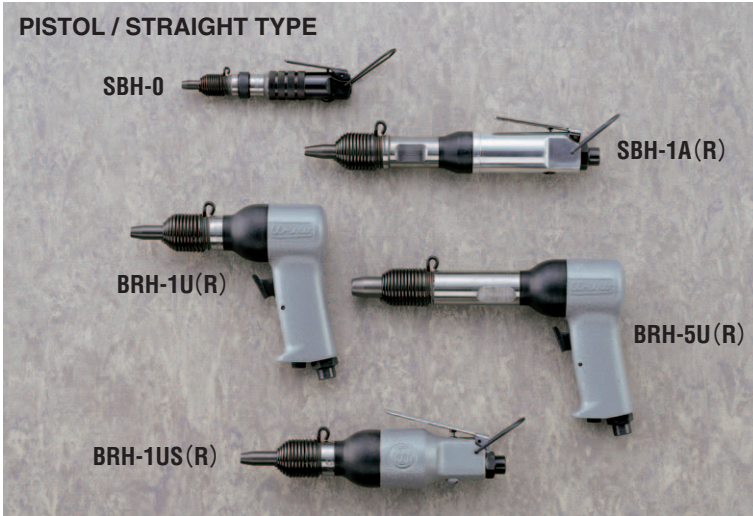
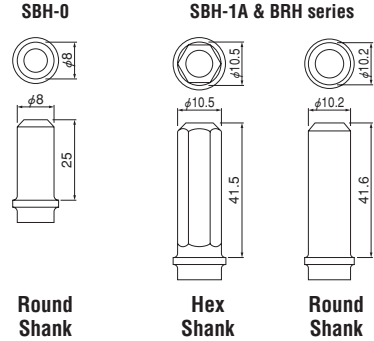


RIVETING HAMMERS

Easily controlled, slow hitting heavy blow gives just the right impact to form a rivet without excessive work or damage to the surrounding metal. These tools are convertible to chipping, caulking and ripping hammers with suitable chisels.



SHANK SIZE



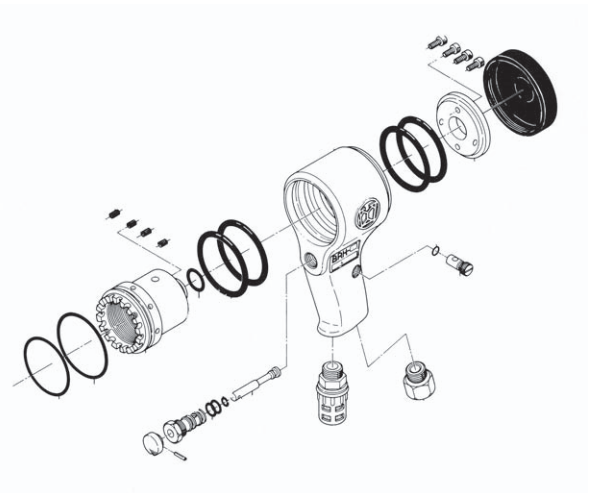
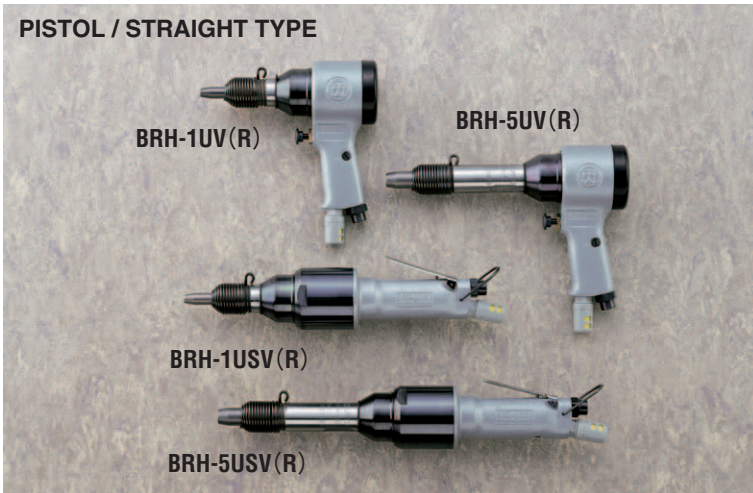
SPECIFICATIONS

Recommended Air Pressure : 0.6MPa(85psi)

Model	Riveting Capacity				Blow Per Min. (about)	Overall Length (about)		Weight Less Rivet Set (about)		Piston Diameter (about)		Piston Stroke (about)		Air Inlet Thread (Pipe Tap)	Air Hose Size		Average Air Consumption		Noise Level	
	Duralumin		Steel			mm	in	kg	lb	mm	in	mm	in		mm	in	m ³ /min	ft ³ /min		dB(A)
	mm	in	mm	in																
SBH-0	2.3	3/32	-	-	6500	123	4 27/32	0.32	0.7	10.00	25/64	23	29/32	NPT1/4	6.35	1/4	0.10	3.5	90	
SBH-1A(R,H)	2.6	7/64	-	-	4000	209	8 15/64	0.86	1.9	11.11	7/16	56	2 3/16	NPT1/4	6.35	1/4	0.15	5.0	92	
BRH-1U(R,H)	3.2	1/8	2.4	3/32	2800	122	4 15/16	1.05	2.4	14.30	9/16	38	1 1/2	NPT1/4	9.5	3/8	0.34	12.0	95	
BRH-1US(R,H)	3.2	1/8	2.4	3/32	2800	180	7 1/8	1.00	2.2	14.30	9/16	38	1 1/2	NPT1/4	9.5	3/8	0.34	12.0	95	
BRH-1UG(R,H)	3.2	1/8	2.4	3/32	2800	187	7 3/8	1.78	3.9	14.30	9/16	38	1 1/2	NPT1/4	9.5	3/8	0.34	12.0	95	
BRH-5U(R,H)	6.4	1/4	4.8	3/16	1800	190	7 1/2	1.40	3.1	12.70	1/2	100	4	NPT1/4	9.5	3/8	0.37	13.0	95	
BRH-5US(R,H)	6.4	1/4	4.8	3/16	1800	248	9 25/32	1.45	3.2	12.70	1/2	100	4	NPT1/4	9.5	3/8	0.37	13.0	95	
BRH-5UG(R,H)	6.4	1/4	4.8	3/16	1800	255	10 3/16	2.13	4.7	12.70	1/2	100	4	NPT1/4	9.5	3/8	0.37	13.0	95	

VIBRATION-LESS TYPE

To meet the growing demand for low noise and less vibration percussive tools, URYU offers four different models.



SPECIFICATIONS

Recommended Air Pressure : 0.6MPa(85psi)

Model	Riveting Capacity				Blow Per Min. (about)	Overall Length (about)		Weight Less Rivet Set (about)		Piston Diameter (about)		Piston Stroke (about)		Air Inlet Thread (Pipe Tap)	Air Hose Size		Average Air Consumption		Noise Level	
	Duralumin		Steel			mm	in	kg	lb	mm	in	mm	in		mm	in	m ³ /min	ft ³ /min		dB(A)
	mm	in	mm	in																
BRH-1UV(R,H)	3.2	1/8	2.4	3/32	2800	162	6 3/8	1.37	3.0	14.30	9/16	38	1 1/2	NPT1/4	9.5	3/8	0.34	12.0	91	
BRH-5UV(R,H)	6.4	1/4	4.8	3/16	1800	227	8 15/16	1.68	3.7	12.70	1/2	100	4	NPT1/4	9.5	3/8	0.37	13.0	91	
BRH-1USV(R,H)	3.2	1/8	2.4	3/32	2800	271	10 21/32	1.60	3.5	14.30	9/16	38	1 1/2	NPT1/4	9.5	3/8	0.34	12.0	91	
BRH-5USV(R,H)	6.4	1/4	4.8	3/16	1800	338	13 5/16	1.90	4.1	12.70	1/2	100	4	NPT1/4	9.5	3/8	0.34	12.0	91	